

WebVue

HTML5 web client

PcVue[®] Solutions

Mastering interfaces between
#Humans
#Systems
#Connected things

WebVue

HTML5 web client

WebVue is built-in HTML5 web client providing a graphic interface to monitor and control your process from any device.

It relies on the latest technologies offering a cost-effective solution combining ergonomics, security and ease of implementation.

AT A GLANCE

- ✓ Monitor & control your PcVue process from a web browser with any devices
- ✓ Mimics, alarm lists & acknowledgment, event logs, real time and historical trends
- ✓ Webservices toolkit available to create your own custom web interface



USER ORIENTED

For end user, IT specialist or system integrator, WebVue is designed to fit any user need from regular to very advanced.

- UX** UX for better efficiency: seamless and smooth Interfaces
Ability to monitor multiple mimics concurrently in multiple web browser tabs
Cross platforms
- SI** Easy to configure and to deploy with the EasyMobile Technology
Multi user capacity
Scalable & open to third party application or portals
Transparent license model
- IT** Secure architectures (DMZ, certificates) and communication (HTTPS)

Security & openness

Security management

The PcVue Web Server station uses Microsoft IIS and OAuth technologies to manage security and authentication jointly with the enterprise firewall. Exchanges are based on RESTful/Json Webservices via HTTPS protocols for encrypted data exchange (SSL V2).

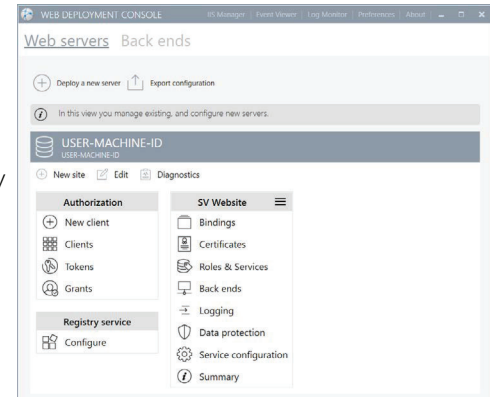
Openness to third party applications

PcVue provides a RESTful/Json webservices toolkit so you can embed PcVue objects (mimics, symbols), real time data, alarms (creation, subscription to lists etc.), event logs (process events, user actions, logins etc.) and historical trends (changes of values etc.) into your own application or web portal.

EasyMobileTechnology

WebVue is based on the **EasyMobileTechnology** which ensures a fast, easy and secure configuration & deployment

- No gateway, no extra plugin
- HTML5
- No client installation
- A deployment console for easy configuration – no scripts – Wizard only
- Open to third-party application
- Adapted to any user: End-user, SI, IT
- Secure scalable architectures and communications
- Easy Diagnostic
- Affordable solution

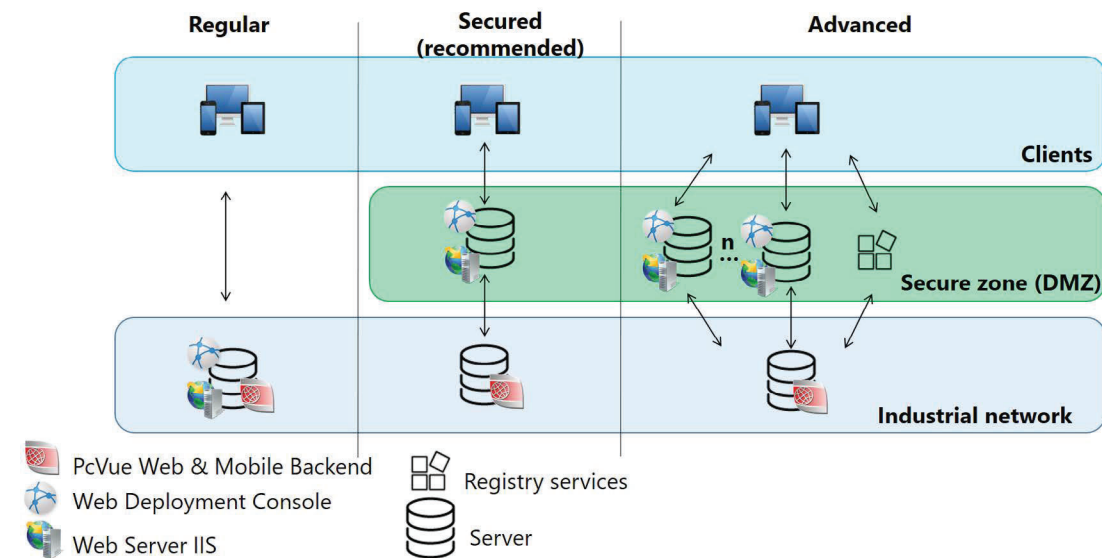


The deployment made easy

The **EasyMobileTechnology** allows deploying web architectures from regular to the most advanced and secured in few clicks!

Go web in **5 easy steps** through wizards of the Web Deployment console

- Step 1:** Setup your mobility server
- Step 2:** Bind your PcVue server
- Step 3:** Secure the connection with a HTTPS certificate
- Step 4:** Deploy
- Step 5:** Run WebVue from your webbrowser



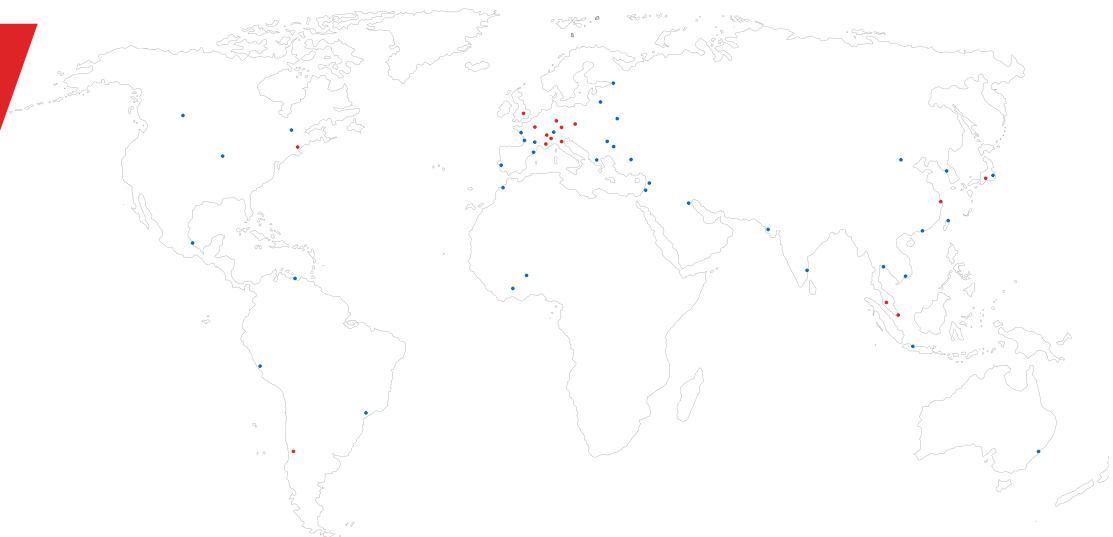
Software platform for IoT, SCADA, BMS & real-time data analytics

ARC Informatique

Headquarters and Paris office
2 avenue de la Cristallerie
92310 Sèvres - France

tel + 33 1 41 14 36 00
fax + 33 1 46 23 86 02
hotline +33 1 41 14 36 25

arcnews@arcinfo.com
www.pcvuesolutions.com



ISO 9001 and ISO 14001 certified

